

COVID-19 Prevention Policies for Rental Customers:

In light of the recent COVID-19 pandemic, we are taking the following steps to ensure that we do our part in preventing the spread of this virus.

In coordination with State and City ordinances, please be sure to observe the following until further notice:

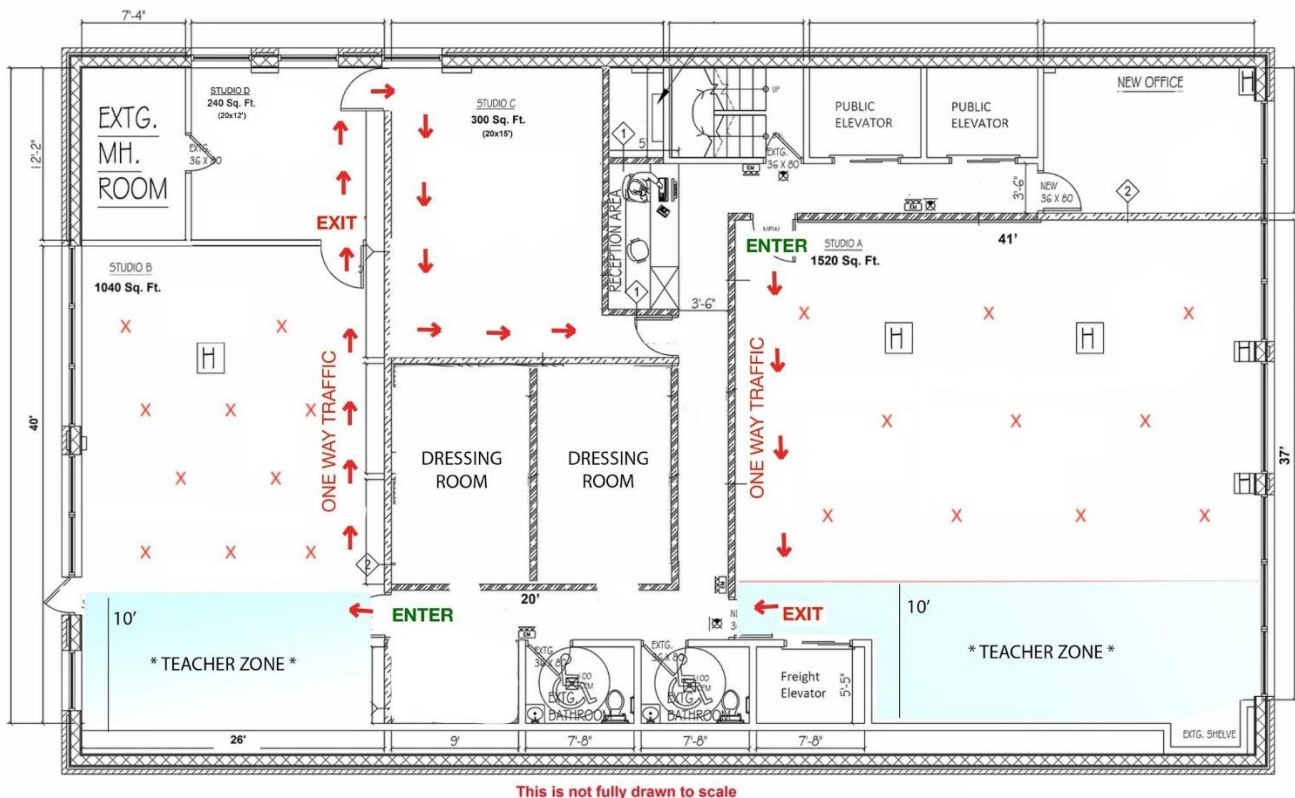
- **Masks Required for entry.** Per state law and our building's policy, you **MUST** be wearing a face covering or mask to enter the space. These masks are required at all times while in the dance studio. If breathing is impaired due to the mask while performing a physical activity, then you may remove the mask to provide aeration provided proper social distancing is observed and consent from those around you is provided. However, they **MUST** be on at all times, otherwise.
- **No Walk Ons.** Until further notice, all visitors will have to make an appointment to be on premises for any reason.
- **Occupancy:** Occupancy must allow a distance of 6 feet between persons. At this time, no more than the following numbers of people are permitted in the following rooms:
 - **Studio A:** 5 persons
 - **Studio B:** 5 persons
 - **Studio C & D:** 1 person
 - **Dressing Rooms:** 4 persons (dancing not permitted)
- **New Egress/Traffic Flow (See Page 2).** For large rentals (6 or more people) or during times when Studio C and D are allocated as common area space, people will enter studio A or B through one door and exit through the other. These doors will be marked accordingly. This will prevent crowding and close contact. Additionally, rooms will be marked off to provide safe distancing measures. See diagram below. The 'teacher' indicates the person who is leading or projecting their voice. That person should keep a minimum distance of 12 feet.
- **Pre-Screening:** All patrons are required to complete a [pre-screening questionnaire](#) prior to every visit. It is simple and only 5 questions. This is mandated by the state of NY.
- **Avoid direct contact.** This includes handshakes, kisses to the face, high fives and any interaction that could minimize space between persons. Avoid touching surfaces with your bare skin. Unless you are with person(s) you live with, social distancing of 6 feet must be observed at all times.
- **Additional Distancing Measures.** If you are projecting your voice, or breathing heavily, you must provide a 12 foot perimeter around yourself and the next person. Wearing a mask, according to studies, can reduce this perimeter.
- **Stay inside hallway markers.** The common areas are marked to allow spacing for those waiting to enter the studio. Please observe them while waiting or let people pass quick as needed.
- **Do not build up steam.** If rooms are hot, please allow for ventilation by opening windows or asking staff to open vents.
- **Liability Waivers.** All persons must sign a waiver of liability and agreement to terms prior to using our space. All customers are using the space acknowledging they are taking the proper health precautions and must waive us for any liability as it pertains COVID-19.
- **Sign-in Required.** All persons entering the space, whether they are there for studio use or to wait in the common space **MUST** sign in at the front desk upon entry. This is for contact tracing purposes.
- **All renters must announce and pre-approve size of their groups.** Only the number of pre-approved participants will be permitted onto the premises. Any additional participants will be turned away from using the space. Violation of this policy is immediate grounds for dismissal without refund.
- **Compliance with State Mandates.** You are required to comply with all State laws in regard to COVID-19. If you traveled to a state or country that is under a quarantine restriction, or have been infected with COVID-19, within the last 14 days you are not permitted to use our space.
- **Yoga Mats and Equipment:** These must be sanitized and disinfected before and after use. You are responsible for disinfecting and cleaning your own mats and supplies. If the floor, barre or other areas need to be wiped after your use, please provide the means to do so.

What we are doing:

- **Cleaning Procedures:** We have purchased hospital grade cleaning supplies. Our staff conduct rounds throughout the day to clean doorknobs, barres, restrooms, table surfaces, and other common areas with disinfectant and cleaning wipes. Cleaner/disinfectant is also available upon request. Cleanings are done several times an hour. All cleanings are logged as per our plan with NY State.
- **Waiting Areas.** Studio C will be a designated waiting area, at times of heavy activity, until further notice. Should your group require more space for participants to either wait, get dressed, etc you (the renter) shall be required to rent the additional studio space to do so.
- **Spaced Scheduling.** We are adding space between groups in order to provide to ample time to clean, disinfect and aerate.
- **Hand sanitizer** is available on the main level and our front desk. Washing your hands for 20 seconds is the best method of prevention. Rubbing alcohol is also very effective.
- **Daily briefings** are given to staff to update them on methods of preventions as well as the virus itself.
- **Staircase Access** is available for entry and exit. This is to avoid crowding into elevators.
- Our staff will be wearing gloves and face coverings.
- **Ventilation** of the studio through our open HVAC system, which circulates fresh air from outside.
- **Allowance of daylight** throughout the space – UV rays are effective against the virus.
- **Space Markers.** Common areas and studios will provide markings to indicate how far to position yourself to observe 6 feet of social distancing.

New Traffic Flow Floor Plan

NOTE: This diagram only shows the maximum allowance. The permitted allowance, stated above, is dependent on current NY regulations and our premises' total occupancy. We shall adhere to the permitted allowance. Stay posted for any updates.



* Students must be spaced 6 ft apart.

** "X" indicates where students should stand while attending

Please be sure to create a safe environment. If any of the above is not being observed, we reserve the right to expel those who are in non-compliance or stop activities all together for the safety of EVERYONE at the SOLE COST of the Patron. Please observe the above so patrons can feel safe.

Thank you!